



CPME MONTHLY BULLETIN

Stay in the Loop!

March 2016

Dear CPME members,

We are pleased to share with you the latest Spring edition of the CPME Monthly Bulletin with the Executive Committee decisions from the physical meeting held in Brussels on 17 March 2016.

The CPME Executive Committee had an intense agenda discussing, inter alia, the future cooperation with the European Patients Forum, the EU stakeholders' joint paper on dementia and the nomination of rapporteurs on HTA and off-label use of medicines.

Moreover, in preparation of the CPME Board, General Assembly and WG meetings taking place on 08-09 April 2016, we would cordially remind you to fill in the registration form, available [here](#), and kindly return it to Christophe Lecourtois (Email: christophe.lecourtois@cpme.eu) if you not have already done so.

Furthermore, following the tragic events that hit Brussels on Tuesday 22nd of March, we would like to convey our sincere condolences to our Belgian friends. Our thoughts and hearts are with all the victims and their families. We confirm that the Board meeting and General Assembly will take place as planned in Brussels on April 8-9.

We hope the bulletin is informative and we invite you to consult our [latest news](#) on the CPME website. Please, don't hesitate to contact us directly if you have any comments, questions or concerns.

*Cordially,
CPME Secretariat*



Internal Affairs and Finance

- **Draft final accounts 2015/revised draft budget 2016 and update on the accounts of the CPD conference.**

The Executive Committee took note of the draft 2015 accounts and the draft 2016 budget. The documents were both approved and will be sent for decision to the CPME General Assembly which will meet on Saturday 9 April in Brussels. Furthermore, the EC reviewed the final accounts of the joint conference of the European Medical Organisations on CPD, which took place in Luxembourg on 18 December 2015. The accounts show an overall loss which shall be equally shared among CPME and other Organisations.

- **Revision of Statutes and Rules of Procedure.**

The Executive Committee reviewed the compilation of the discussion on the revision of the CPME statutes and rules of procedure. It was decided to first present and discuss the principles of the changes proposed during the next CPME Board meeting in April. Based on this discussion, the concrete changes will be presented and decided upon at the General Assembly in November 2016.

- **Liaison between CPME members and Executive Committee.**

The Executive Committee reviewed the concept note proposing a structure of liaison between the CPME membership and the CPME vice-presidents. This communication is intended to increase the reciprocal exchange on decisions and priorities. The EC agreed to consolidate the note and to inform the CPME membership of the initiative at the CPME Board meeting on 9 April.



Trade policy

The Executive Committee reviewed the invitation to CPME to join the newly created [Health and Trade Network](#) which aims to act as a think tank for not-profit organisations active on the impacts of trade policy and agreements on health. Following the recommendation of CPME Rapporteur Dr Heikki Pälve, the Executive Committee agreed that the initiatives approach was not in line with CPME's policy.

Nomination of Rapporteurs on HTA and off-label use of medicines

The Executive Committee reviewed the nominations received from the Belgian delegation which propose Dr Bernadr Maillet for the position of CPME Rapporteur on Health Technology Assessment (HTA) and Prof. André Herchuelz as CPME Rapporteur on Off-Label Use of Medicines. The EC approved the nominations. CPME Secretariat will inform the nominees accordingly.



Pulmonary health



The Executive Committee discussed the invitation from advocacy groups representing patients with Idiopathic Pulmonary Fibrosis (IPF) for CPME to co-sign a patient charter (please, click [here](#) to get more info). The EC reviewed the invitation against the background of the existing CPME policy base on rare diseases. It was agreed that it is preferable that CPME decline the co-signature on this specific charter and develop a general policy on rare diseases. The CPME Working Group on Pharmaceuticals shall be asked to launch the drafting of the policy. It was recommended to consult the [UEMS](#) section on rare diseases for this process.

EU Stakeholders' Joint Paper on Dementia

The Executive Committee was presented a [joint paper with recommendations to policy-makers on action on dementia](#). The paper has already been co-signed by a number of organisations from the health community, with the European Federation of Nurses' Associations ([EFN](#)) coordinating the process. The EC reviewed the paper and raised several queries as regards statements and co-signatories. It was agreed that CPME supports the principle of the initiative, but since the paper can no longer be amended, declines the co-signature.



Patient Access Partnership (PACT): nomination of a new treasurer



The Executive Committee reviewed the invitation from [PACT](#) to CPME to appoint a new representative to the PACT steering committee to replace RA Birgit Beger who served as treasurer to PACT. The Executive Committee decided to postpone the discussion to the EC meeting on 12 May, in order to await the outcome of the CPME Board's decision on the appointment of the new CPME Secretary General on 9 April. In the interim, CPME Secretariat is to attend meetings of the PACT steering committee and report.

Transatlantic Trade and Investment Partnership (TTIP)

The Executive Committee reviewed the consolidated [summary of explorative research](#) on Mutual Recognition Agreements (MRAs) in the TTIP and other free trade agreements (FTAs). It was discussed whether the CPME call for the exclusion of healthcare services from the TTIP would be compatible with a request for the creation of an MRA. In the interest of policy coherence, the Executive Committee is inclined to refrain from any further action on the MRA in the scope of the agreement and will inform the Rapporteur of the CPME Working Group on TTIP and other FTAs accordingly.



Up-date of Memorandum of Understanding with EPF



The Executive Committee discussed the status of cooperation and relations with the European Patients' Forum ([EPF](#)). Dr Katrín Fjeldsted referred to the possibility of renewing the Statement of Joint Principles with EPF as a positive token of cooperation since the last statement (see [here](#)) dates from 8 April 2008. A high level meeting with EPF should be explored in order to enhance a constructive dialogue between the two organisations. Trust and reciprocity in the patient-doctor relationship are crucial.



Impact of the European semester on health policy

The Executive Committee was presented a background note on the European Semester and its impact on health policy. It was explained that the European Semester comprises an annual macroeconomic assessment of EU Member States' economies, on the basis of which country specific recommendations are issued to governments proposing policy action and reforms. Health policy is one of the areas increasingly addressed, consequently national policy decisions are affected, in particular in Member States which receive financial assistance from the EU. The EC agreed that this topic is relevant and should be addressed by the Executive Committee in greater depth at a future meeting.

Explaining the EU's economic surveillance of healthcare systems

Rita Baeten, Senior Policy Analyst, European Social Observatory (OSE)

[Presentation](#) (Slides, PDF)

Monitoring efficiency of health systems and health system reform effects

Christoph Schwierz, Policy Analyst Sustainability of public finances, European Commission, DG ECFIN

[Presentation](#) (Slides, PDF)

Patient empowerment – EPF campaign

Given the extent of the roadmap and its many implications, the Executive Committee discussed the document and decided further work is needed.



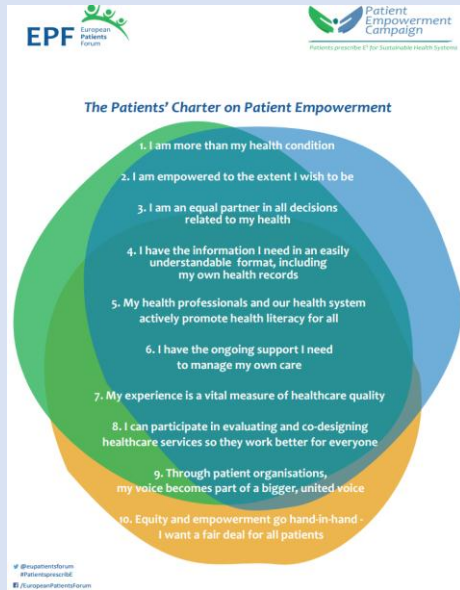
Revision of the Health Literacy Consensus Paper

The Executive Committee discussed the consensus paper and decided to have further information before taking a decision the revision of the Health Literacy Consensus Paper.

International calendar

The EC reviewed the CPME participation at forthcoming meetings of CPME members, European Medical Organisations and international partners. Several events are subject to conflicting appointments, therefore it will not be possible to provide CPME representation.





The Patients' Charter on Patient Empowerment

Please, find the Patients' Charter on Patient Empowerment [here](#).



[#PatientsprescribE](#)

CPME General meetings, April 2016

SCHEDULE:

07 April 2016

- “CPME Secretariat open house and welcome reception” at the CPME’s Office – from 19h00 to 21h00

08 April 2016

- CPME Executive Committee meeting – from 09.30 to 12.30,
- Lunch at “the International Auditorium”– from 12.30 until 13.30,
- CPME Working Group Meetings at “the International Auditorium” – from 13.30 until 17.30,
- CPME Gala dinner at Restaurant “La Manufacture”, Rue Notre Dame du Sommeil 12-20, 1000 Brussels– from 19.30 to 22.00

09 April 2016

- CPME Board and General Assembly at “the International Auditorium” – from 09.00 until 16.30
- Lunch at “the International Auditorium” – from 12.30 until 13.30.



We would cordially remind you to fill in the registration form, available [here](#), and kindly return it to Christophe Lecourtois (Email: christophe.lecourtois@cpme.eu) if you not have already done so.

VENUE:

The International Auditorium

Boulevard du Roi Albert II, 5

1210 Brussels

Belgium

Tel. +32 (0)2 2240254

Fax: +32 (0)2 2240299

E-mail: info@theinternationalauditorium.be

Web Site: <http://www.theinternationalauditorium.be/en/>



Brussels Airport: for all updates and practical information after the 22/03 attacks, please click [here](#). Alternatively, you may find [here](#) the Twitter account of the Brussels Airport with the last updates.

[@CPME EUROPA](#) Twitter activities. We renew our invitation to follow us on Twitter to be daily informed on the CPME activities. The CPME account is carefully followed by the European Institutions, in particular the DG SANTE, and from the main stakeholders in the healthcare sector. The CPME Secretariat makes active use of this social media to share messages and for lobbying purposes.



Next Executive Committee meeting: [meeting 08 April, 09h00-13h00](#)